

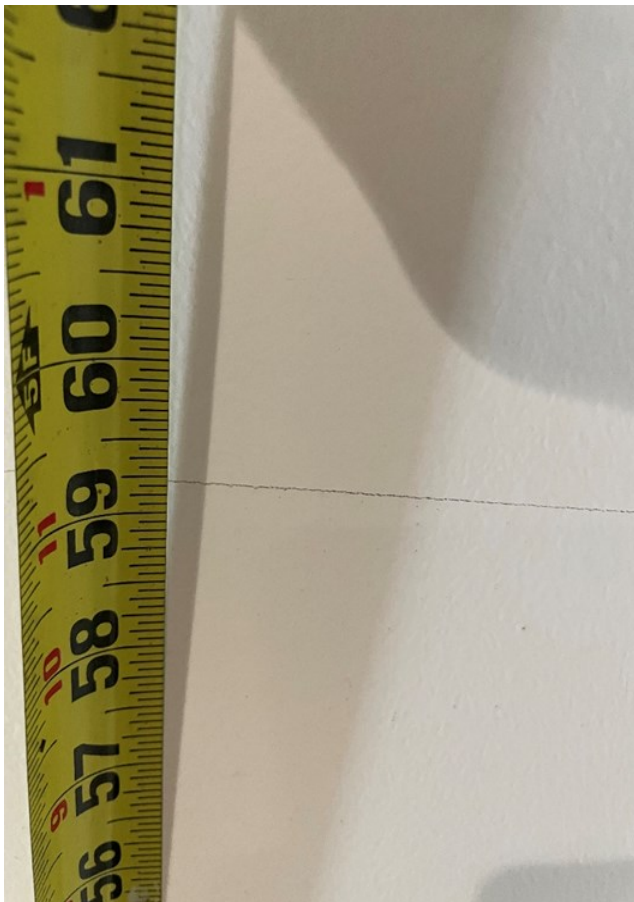
J THOMAS HOME

Floating Mantel Installation Instructions

Layout

1. First determine the location you would like to hang the mantel.
2. Example: A bracket for a mantel that would be hung 5' from the floor to the top of the mantel would need installed at 59.25" to install the top of the mantel at 5' from the floor.
 - A. For mantels and 3" box shelves with upgraded metal brackets, bracket will sit roughly 3/4" lower than the height you want the top of the mantel.
3. Mark location with tape or pencil.

[Video Walkthrough](#)



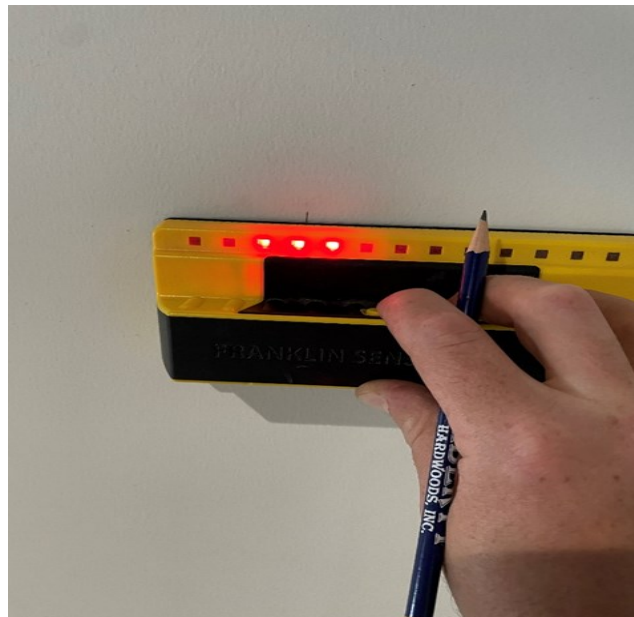
4. With a level, strike a line across the wall $3/4$ " lower than the height at which you want the top of the mantel;

[Video Walkthrough](#)



5. Using a stud finder, mark at least two studs.

[Video Walkthrough](#)



- A. If unable to locate studs, we recommend heavy duty togglers in drywall or metal studs.
- B. Once location is determined remove bracket from mantel.

Installation

8. Hold bracket up to marked location on wall with teeth facing up.
9. Mark hole in tooth lined up with stud.
10. Set bracket to the side and drill your first hole.

[Video Walkthrough](#)



11. Put bracket back up to wall and fasten your first screw about 80%.
12. Now set your level across the pegs and level bracket.

[Video Walkthrough](#)



13. Once bracket is level, fasten all screw until there is no play or wiggle in the bracket.
14. Test the bracket by trying to shimmy it around. It should feel nice and tight against the wall.

[Video Walkthrough](#)



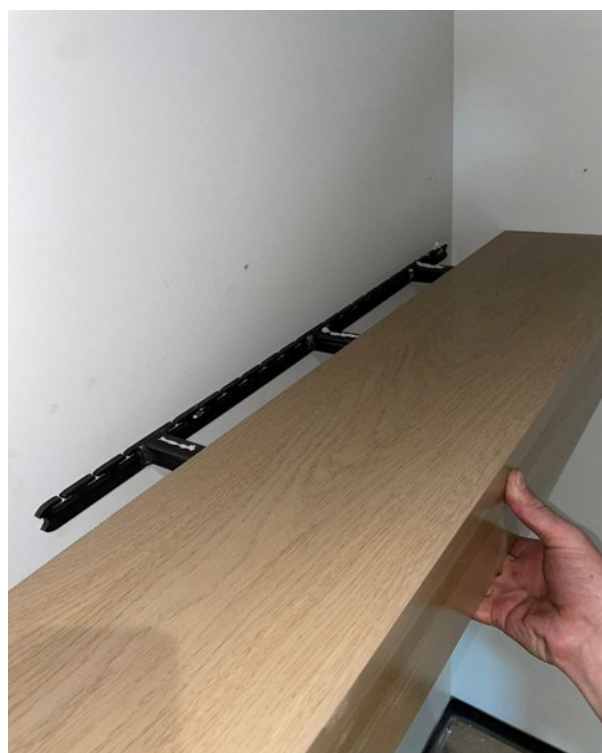
15. Before placing mantel on bracket, apply a silicon adhesive to the top of the rods.

A.. We recommend using liquid nails.

[Video Walkthrough](#)



16. Place mantel on bracket.



18. Put some weights on the mantel until the adhesive is cured.

[Video Walkthrough](#)



19. Your mantel is now complete!

